



Designing an IP Studio Practical lessons from the field

Gerard Phillips – Systems Engineer
Arista Networks



IP SHOWCASE THEATRE AT IBC2019 : 13-17 SEPT 2019



Scale

- Absolutely vital to have clear objectives here 😊
- Think - initial deployment >>>>>> anticipated future needs
- Plan for 25/50/100Gbe capability – 2.5x more dense than 40Gbe
- 400Gbe provides 4x capacity for massive scale
- Beware feature / scale creep



IP SHOWCASE THEATRE AT IBC2019 : 13-17 SEPT 2019 2



Scale – Rules of thumb

- Sometimes easier to start with “SDI” scale
 - Overlay this with physical constraints
 - Average “full duplex” use?
 - Average planned BW usage %?
 - Average flow size – Audio/SD/HD/UHD?
 - Are you thinking ST2110, or ST2022-6?
- 576²
 - Centralized model
 - 60% full duplex
 - Max 75% BW usage
 - 80% 1080p50, 20% UHD
 - ST2110
 - $576 * (0.8 * 2 + .2 * 10) / (0.6 * 0.75)$
 - 4.6 Tbps total throughput
 - 46x 100Gbe host facing ports.

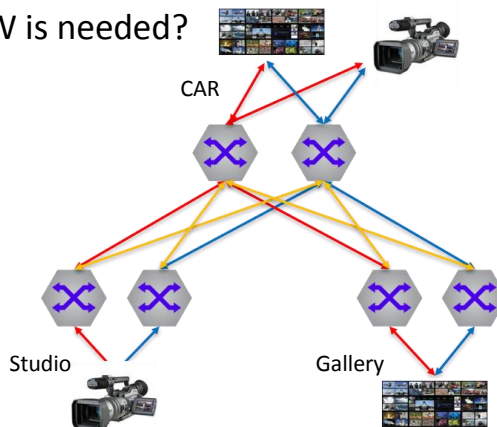


IP SHOWCASE THEATRE AT IBC2019 : 13–17 SEPT 2019 ³



Facility Geography

- Consider your workflows, how much BW is needed?
- Centralized, or more Campus like?
- Physical cabling lengths?
- Shared “virtual” facilities model?
- Think “failure domains”
 - Functional alignment
 - Resiliency alignment

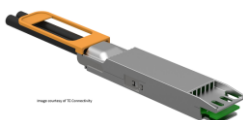


IP SHOWCASE THEATRE AT IBC2019 : 13–17 SEPT 2019 ⁴



Physical Cabling

- DAC - Direct Attach Copper.
 - 400Gbe @ 3m, 10/25/40/50/100Gbe @ **5m**
- AOC – Active Optical Cable.
 - 10/25/40/50/100Gbe 400Gbe @ **30m**. Can be broken out
- SR – Short reach
 - Typically **70-100m**, depending on OM3/OM4 MM fiber
- LR – Long reach
 - Typically **10km** over SM fiber



IP SHOWCASE THEATRE AT IBC2019 : 13-17 SEPT 2019 ⁵



Some thoughts on costs

- Don't forget Interconnect and fiber costs in your estimates
- MM vs SM Infrastructure? Is really cost vs simplicity
- Monolithic may look expensive if your initial scale is small - you're not using it all
- Monolithic often cheaper for comparable end point count
- Switching / connectivity costs are typically 10% of a green field DC installation – Does that feel right for Broadcast??

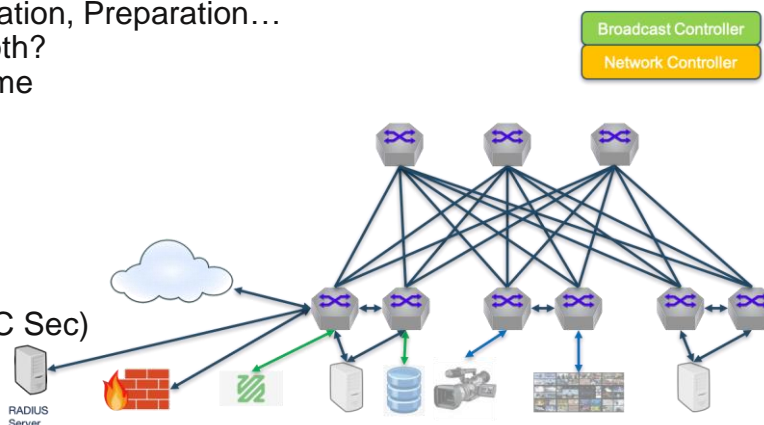


IP SHOWCASE THEATRE AT IBC2019 : 13-17 SEPT 2019 ⁶



Network Services

- Preparation, Preparation, Preparation...
- IGMP or SDN, or both?
- IP addressing scheme
- Dynamic Routing
- MLAG
- Firewalls
- Multi-Tenancy
- L2 mobility (VM's)
- NATing
- Encryption (IP / MAC Sec)

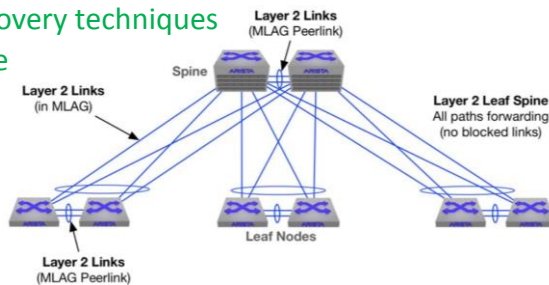


IP SHOWCASE THEATRE AT IBC2019 : 13-17 SEPT 2019



L2 vs L3

- Widely used in small Data Centers, Campus, etc
- L2 networks typically deployed for audio installations
 - Simple
 - Low bit rate flows, undersubscribed networks
 - Some control systems use L2 scoped discovery techniques
 - MLAG provides scale, and spine resilience
 - Limited to 2 spines
 - Large failure domains
 - Routing in the spine

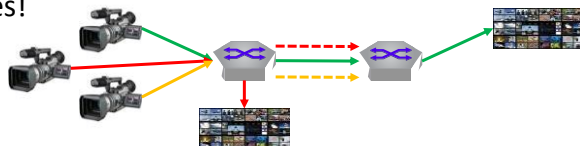


IP SHOWCASE THEATRE AT IBC2019 : 13-17 SEPT 2019 8



L2 vs L3

- **L2 does not suit Live Production, high bit rate multicast**
 - Flows originated in remote switches are flooded towards the querier
 - This potentially requires very large pipes!
 - Large failure domains
 - Limited scalability
- **L3 is the way to go**
 - “Switches” do routing these days & PIM allows multicast to be routed
 - Failure domains are now able to be much smaller
 - Flooding towards the querier is no longer required



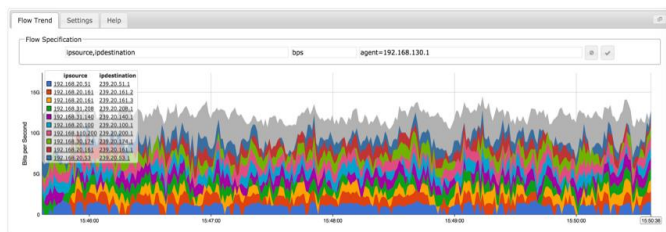
IP SHOWCASE THEATRE AT IBC2019 : 13-17 SEPT 2019 9



Day one – standup tools

Make your life as easy as possible:

- Zero Touch Config
- Bash, tcpdump
- Script your configs
- Name your switches
- Enable LLDP
- Provide port descriptions



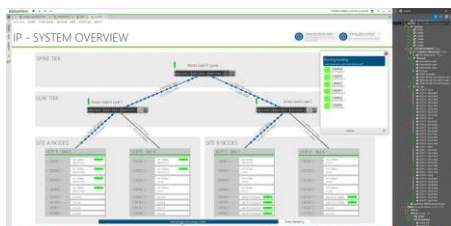
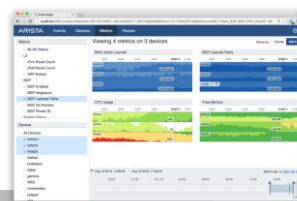
IP SHOWCASE THEATRE AT IBC2019 : 13-17 SEPT 2019 10



Day 2 – ongoing monitoring

Transparency and Visibility

- Plan it in!
- SNMP, Syslog, Telemetry
- Port Mirroring, Optical tapping
- Broadcast specific monitoring tools



IP SHOWCASE THEATRE AT IBC2019 : 13-17 SEPT 2019 11



Summary

- You can't do too much planning and preparation
- Make sure your team is cross-functional
- If you don't have the in-house skills:
 - Bring in an experienced SI or
 - Engage AS/PS from the network vendor
 - Use the process to build your skills
- Treat Telemetry, Monitoring and Visibility as a 1st class citizen
 - Build it in from the beginning
 - You'll benefit straight away



IP SHOWCASE THEATRE AT IBC2019 : 13-17 SEPT 2019 12



Thank you

Gerard Phillips, Arista Networks

gp@arista.com

+44 7949 106098

Thank you to our Media Partners



IP SHOWCASE THEATRE AT IBC2019 : 13-17 SEPT 2019 ¹³